



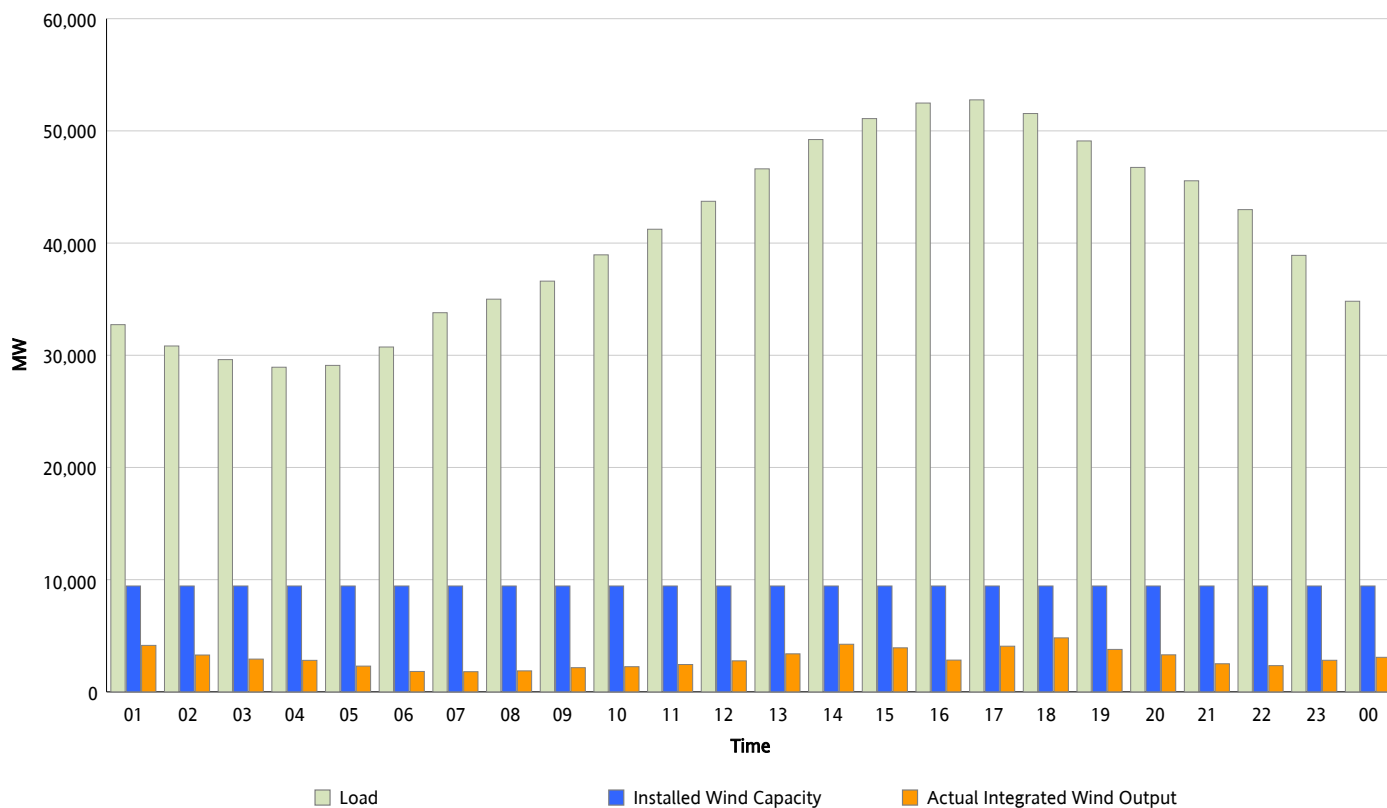
## ERCOT Grid Operations

### Wind Integration Report : 05/07/2012

Peak Load	52,766 MW
Load Peak Hour (HE)	17
Wind Over Peak	4,072 MW
Wind Record 04/13/12	7,925 MW
Max Wind Value*	5,270 MW
Wind Peak Time	17:13
Wind Integration %	10.16 %

#### Hourly Average Actual Load vs. Actual Wind Output

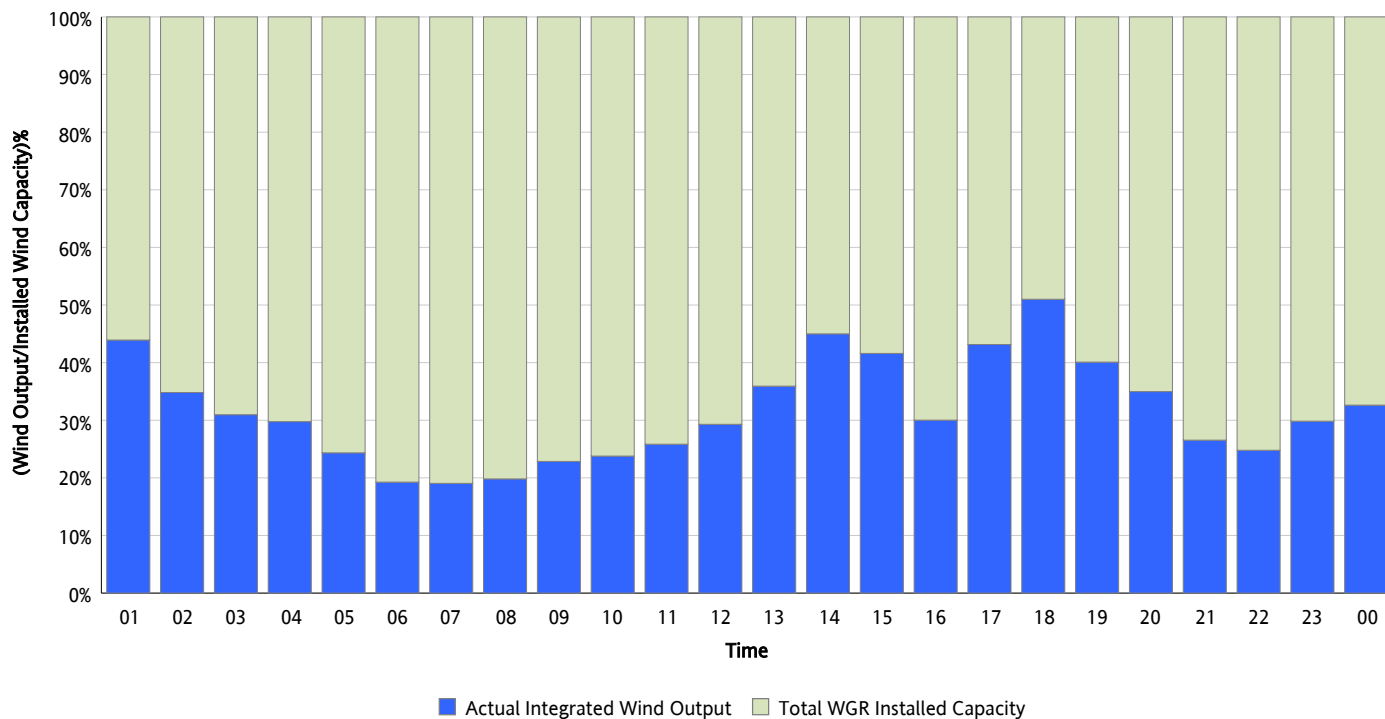
05/07/2012



\* Wind Record and Wind Max represent instantaneous values and the rest of the values are integrated over the hour

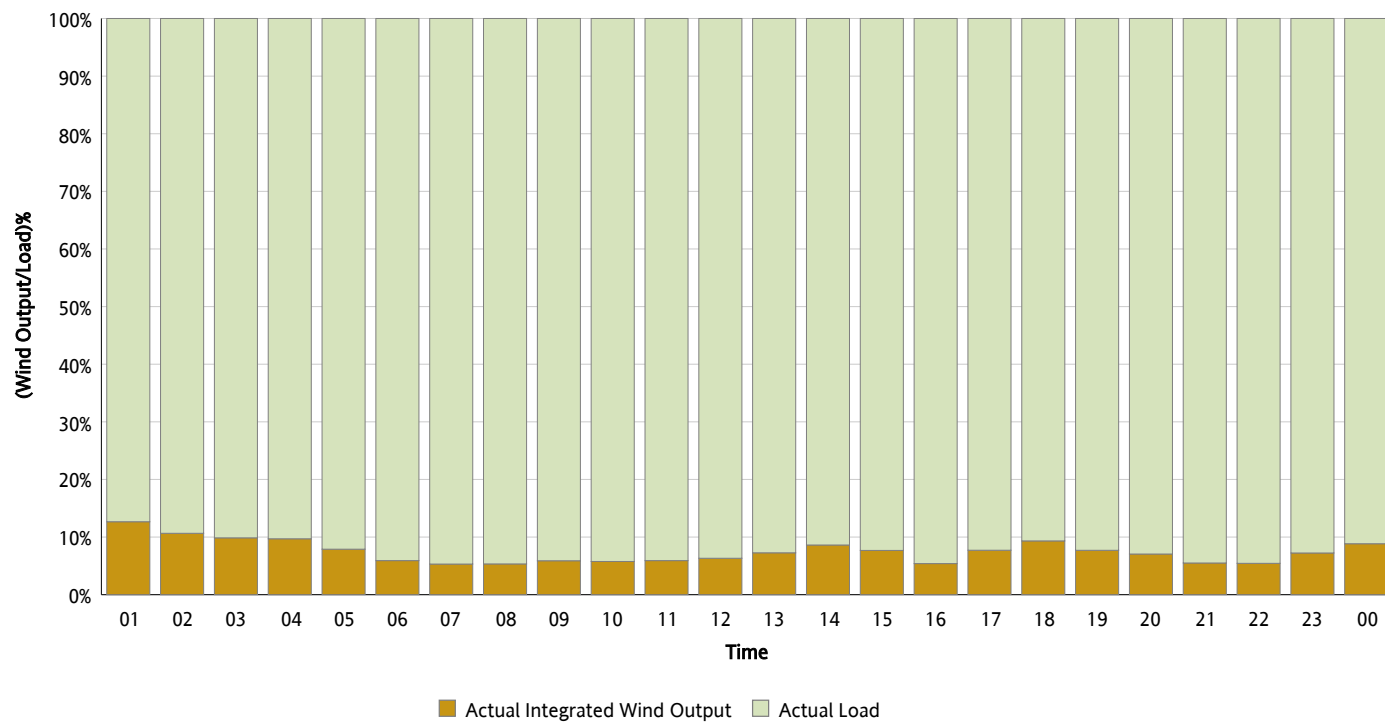
## Actual Wind Output as a Percentage of the Total Installed Wind Capacity

05/07/2012



## Actual Wind Output as a Percentage of the ERCOT Load

05/07/2012



## ERCOT Load vs. Actual Wind Output

04/30/2012 - 05/07/2012

